

## INSULATED CHILLTEMP® REFRIGERATED CABINET MODEL R-171-SUA-20E

### FEATURES AND BENEFITS:

- Fully insulated double capacity mobile ChillTemp® refrigerated cabinet for holding food and beverages at serving temperature.
- Forced air system provides even distribution of cold air; cabinet maintains temperatures from 33°F (.5° C) to 40°F (4.5° C). Automatically defrosts.
- Hi efficiency compressor with automatic overload reset. Uses low GWP, environmentally-friendly refrigerant blend R513a, compatible with California regulations and available for sale in state.\*
- Stainless steel construction throughout for ease of cleaning. One piece extended base protects cabinet body.
- Push/pull handles on both sides prevent damage to walls; allows easy maneuvering.
- Self-closing insulated doors prevent temperature loss. Magnetic door gaskets for proper seal.
- Full length extruded door handles for “easy open”; positive catch (available in USA only) secures door during transport.
- Perimeter door heater to prevent condensation.
- Interior LED light for improved visibility.
- Generous 39-cubic foot interior.
- Twenty sets of chrome plated wire universal angles accommodate a large variety of pan sizes on adjustable 1-1/2" centers.
- Heavy duty 6" casters, two rigid and two swivel with brakes. Provides mobility when fully loaded.
- One piece welded base with perimeter bumper provides solid foundation to support heavy loads.



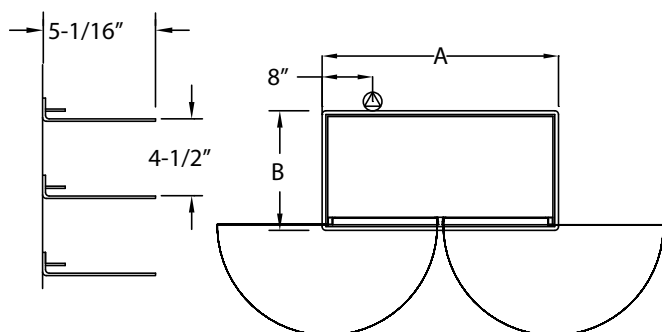
R-171-SUA-20E

### ACCESSORIES and OPTIONS (Available at extra cost):

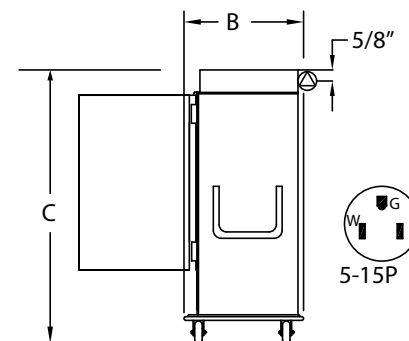
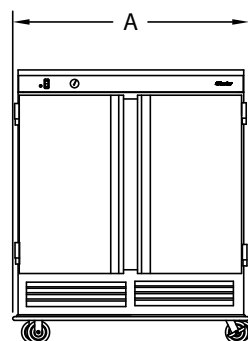
- ☐ Extra Universal Angles
  - ☐ Drop Down Pull Handle
  - ☐ Menu Card Holder
  - ☐ Polyurethane Casters
  - ☐ Magnetic Door Latch (USA only)
  - ☐ 240 Volt Service
  - ☐ Interior for (56) 18" x 26" pans
- See page K-2 for accessory details.

\* Products manufactured after 8/1/2019 use R513a, products manufactured before 8/1/2019 use R134a

# R-171-SUA-20E



DETAIL OF  
PAN SLIDE



CRES COR MODEL NO.	PAN			DIM "A"	DIM "B"	DIM "C"	INSIDE DIMENSIONS				WEIGHT ACT.
	CAP/ ANGLES	SIZE		WIDTH	DEPTH*	HEIGHT	WIDTH	DEPTH	HEIGHT		
R-171-SUA-20E	20 SETS	SEE NOTE BELOW	IN	62-13/16	39-1/4	77-1/4	51-1/4	29-13/16	48	LBS	630
			MM	1596	997	1962	1302	757	1219	KG	286

NOTES: 1. Pan sizes 22" x 20" (560 x 510) Roast & Bake Pans, 10" x 20" (255 x 510) Roast & Bake Pans, 18" x 26" (460 x 660) Bun Pans, 14" x 18" (355 x 460) Service Trays, 12" x 20" (305 x 510) Steam Table Pans.

Refer to Pan Size Chart at end of section.

2. When ordering bumpers, add 2" to overall dimensions.

\*Exceeds dimensions to fit through single doorway.

ALL CONSTRUCTION IS RIVETED, WELDED AND FINISHED.

## CABINET:

- Body: 22 ga. stainless steel
- Reinforcement: Internal framework of 16 ga. stainless steel
- Insulation: Foam in Place
- Push/pull handles (2)
- Interior coved corners

## BASE:

- One piece construction, .125 aluminum
- Casters: 6" dia., modulus tires, 2" wide, load cap. 450 lbs. each, temp: 120°F continuous. Zerk fittings. Two rigid and two swivel casters with brakes
- Perimeter bumper: 1 x 1 gray non-marking rubber

## DOORS:

- Formed 22 ga. stainless steel
- Extruded handles
- Transport latches
- Hinges: Heavy duty chrome plated steel
- Gaskets: Perimeter type, magnetic Santoprene

## PAN SLIDES:

- Wire angles (.306 dia.), nickel chrome plated steel, mounted on lift-off posts
- Spaced on 4-1/2" centers; adjustable on 1-1/2" centers

## ELECTRICAL COMPONENTS:

- Thermostat: Pre-set to 38° F (3.3° C)
- Lighted Power Switch
- Power cord: Permanent, 10 ft., 14/3 ga. with molded plug
- Compressor: High Efficiency
- Condensate evaporator: Electrical
- R513a refrigerant (after 8/1/2019); R134a refrigerant (before 8/1/2019).
- Vent Fan
- Perimeter Door Heater
- Interior Compartment Light

## POWER REQUIREMENTS:

- 120 Volts, 60 Hz., single phase, 15 Amp. service

## SHORT FORM SPECIFICATIONS

Cres Cor Refrigerated Cabinet Model R-171-SUA-20E. Cabinet 22 ga. stainless steel; stainless steel internal frame. (20) sets of wire universal angles for multiple pan sizes, adjustable spacing every 1-1/2". Doors, 22 ga. stainless steel. Foam insulation in sides and doors. Interior coved corners. High efficiency compressor, 120 Volts. One piece base, .125 aluminum. 6" casters, (2) rigid and (2) swivel with brakes, Zerk fittings. Load capacity 450 lbs. each. Perimeter bumper. 2-Year Parts / 1-Year Labor warranty. Provide the following accessories: \_\_\_\_\_ . CSA-US/C, CSA to NSF7 listed.



Scan QR code to view Spec Sheet,  
Operating Manual, Wiring Diagram  
or to call Customer Service.

If you need a QR reader visit your App  
Store on your Smartphone or Tablet.



5925 Heisley Road • Mentor, OH 44060-1833  
Phone: 877/CRESCOR • Fax: 440/350-7267  
www.crescor.com

© Crescent Metal Products, Inc. 2018 All rights reserved.

*In line with its policy to continually improve its products, CRES COR reserves the right to change materials and specifications without notice.*

Made in America Since 1936